

BUSINESS BROCHURE



Website: <https://hitechnest.in/>

Email : info@hitechnest.in

Mob: 7530930777

Address: 2nd floor Omax 2 Jasola Delhi 110025

About Us

HiTechNest.in

Located in Delhi India HiTechNest is dedicated to providing small accommodation solutions for hotels, resorts, glamping and B&Bs.

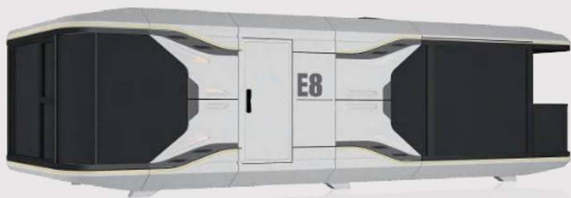
HiTechNest

HiTechNest is a prefabricated house manufacturer for R&D, production, sales and installation, with a total area of 40,000m² for the factory and showroom, and more than 300 employees, the factory has ISO 9001 management certification and CE certification. We have developed many series of products, such as capsule house, apple cabin, dome room, etc., to meet the needs of different customers' projects.

HiTechNest breaks the traditional building practices, the house has a unique shape, short construction period, unlimited terrain, suitable for placing on the beach, lakeside, mountains, deserts and other places, which brings a better return on investment for hotel projects. Our products are exported to Americas, Australia, Europe, the Middle East, Southeast Asia, Africa, etc. We have local sales reps in many countries, and we have landed many projects around the world.



Product collection



CAPSULE HOUSE SERIES



APPLE CABIN SERIES



TWO-STORY CABIN SERIES



NATURAL HOUSE SERIES



DOME HOUSE SERIES



BOAT HOUSE SERIES





1

CAPSULE HOUSE



Trending Hotel



No Terrain Restriction



Fine Decoration



Luxury Living

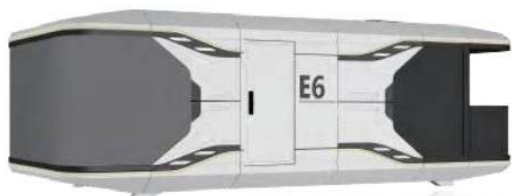


Easy Installation



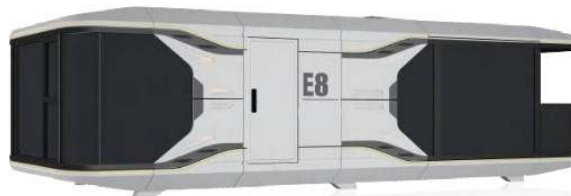
Fast Project Building

PRODUCT LIST



E6 balcony

8.2M*3.2M*3.2M if possible
Area 27.2 Sq M in ft also



E8 balcony

L*W*H: 11.5m*3.2m*3.2m

Area: 36.8m²



E8 no balcony

L*W*H: 11.5m*3.2m*3.2m

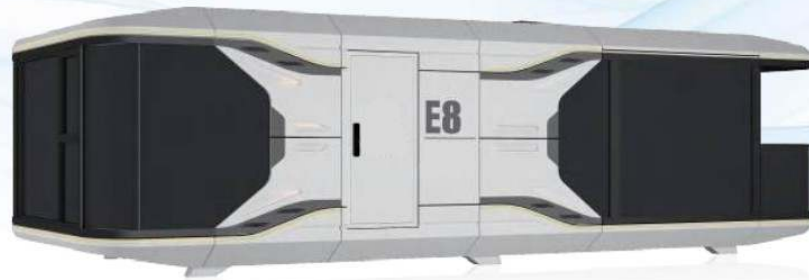
Area: 36.8m²



D8

L*W*H: F1:14m*3.4m*3.2m F2:9m*3m*2.5m

Area: 47.6m²+27m²

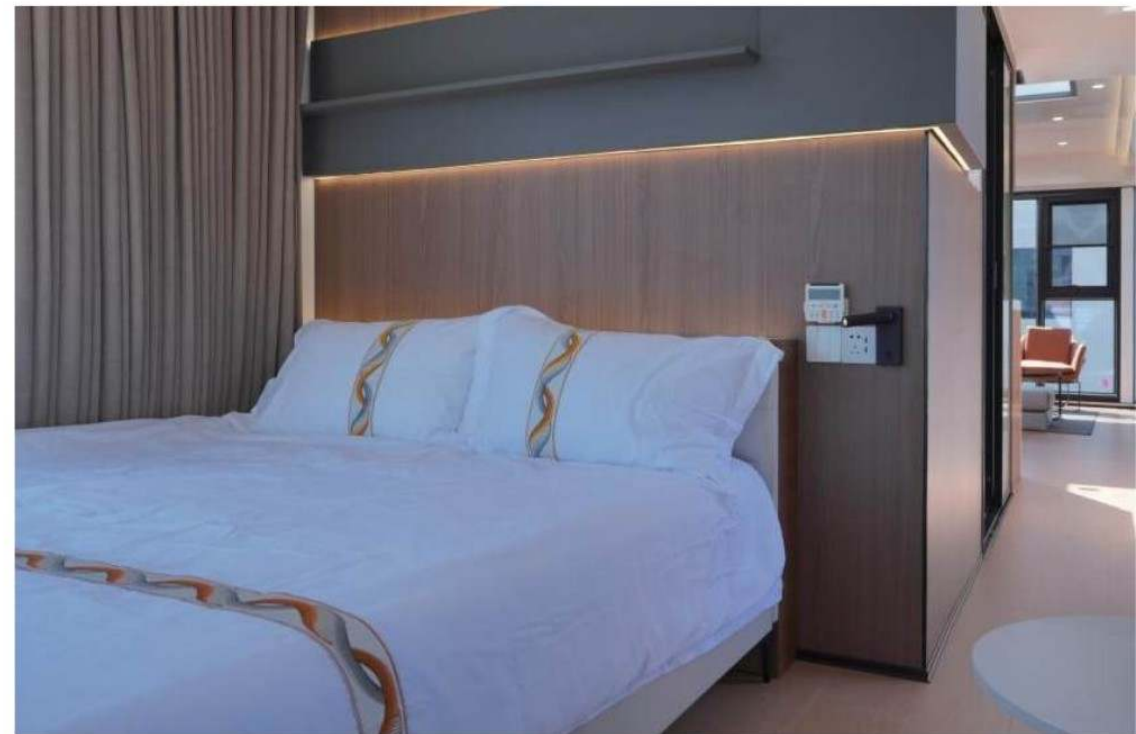
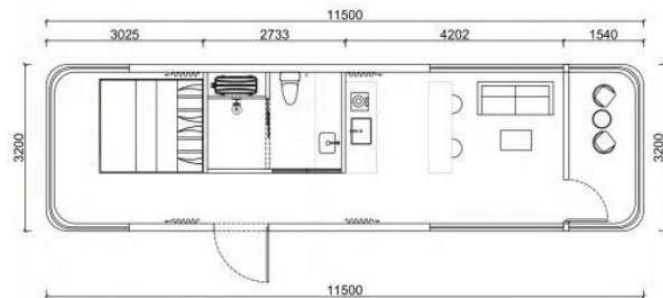


L*W*H: 11.5m*3.2m*3.2m

Area:36.8m²



The E8 is the best-selling model and is designed in a spaceship shape with an angular shell and curved glass for a great look. The house adopts the layout of two rooms in the front and back and a central bathroom. Both rooms are equipped with 270-degree oversized floor-to-ceiling windows for viewing, together with an oversized balcony with an unobstructed view. Whether it is a hotel, B&B or self-living, whether it is placed on the beach, lake, mountain or desert, it allows you to experience the feeling of living in the scenery.

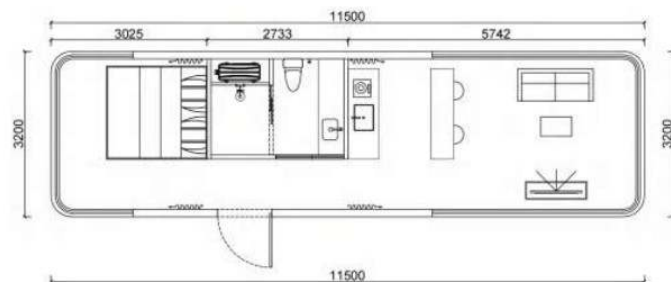


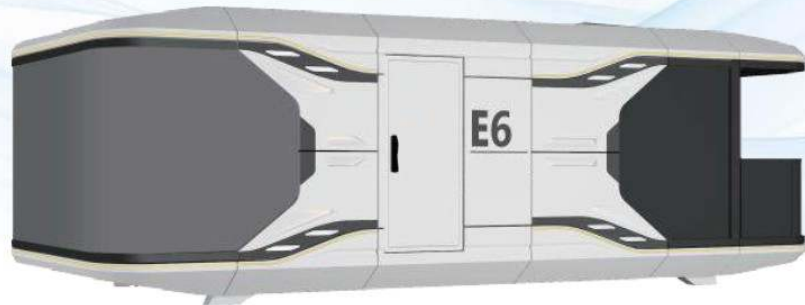


1 /L*W*H: 11.5m*3.2m*3.2m /Area:36.8m²



This E8 is the model without balcony, retains the original layout and removes the balcony, allowing more space in the front room, so that it can be used as a kitchen and living room, or master bedroom to meet your personalized requirements. Meanwhile the closed space is more suitable for cold regions, such as Russia and Canada, with better insulation. All the capsule can be transported fully loaded and disassembled, and for disassembled projects with a large number of items, Hitechnest can come to your home and install them, saving costs such as freight.

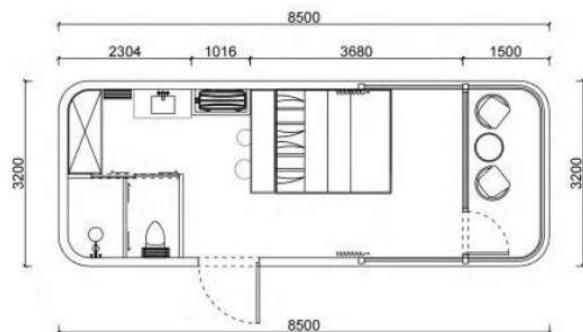




■ L*W*H: 8.5m*3.2m*3.2m Area:27.2m²



The E6 is a scaled down version of the E8, with the width and height remaining the same, the length has been shortened from 11.5m to 8.5m, a considerable drop in price. The exterior draws on a spaceship-inspired design, with one bedroom and one bathroom, both equipped with oversized 270-degree floor-to-ceiling windows for viewing, plus an oversized balcony for unobstructed viewing visuals.

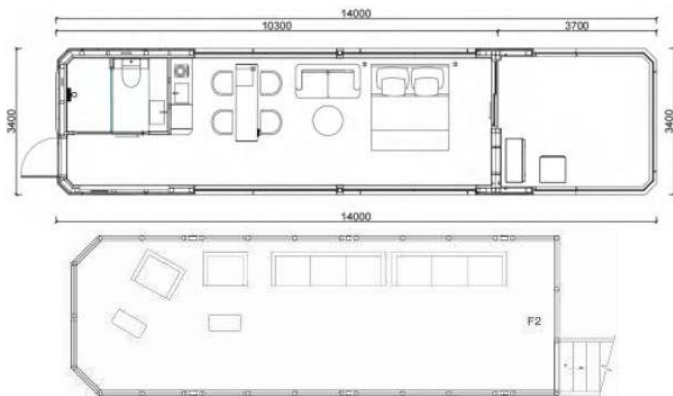




■ L*W*H: F1:14m*3.4m*3.2m F2:9m*3m*2.5m Area: 47.6m²+27m²



The D8 is the most high-end room type, drawing on luxury yacht-inspired design while increasing length and width to allow for more space. On the first floor, a one-bedroom, one-bathroom layout is used for lounging and living; on the second floor, the superb second floor terrace, with its superb, unrivaled views, is suitable for high-end luxury hotel B&Bs. The second floor terrace can be disassembled for transportation and then assembled locally.



STANDARD CONFIGURATION

- Anti seismic hot-dip galvanized steel structural system
- Multi layer thermal insulation structural system
- Standard color custom aluminum outer panel cladding
- Customized aluminum ceiling panels in standard colors
- Standard color custom interior decorative wall/ceiling panels
- Standard color custom interior cabinet
- Top Brand high-end bathroom fixtures
- Top Brand water pipes and circuit main material construction system
- Whole house HVAC+water heater
- Whole house electric track+sunshade
- Whole house lighting+indoor and outdoor ambient lighting
- Aluminum alloy door and windows system hollow low-e tempered glass curtain wall structure
- Thermal insulation and fireproof entrance door intelligent access control

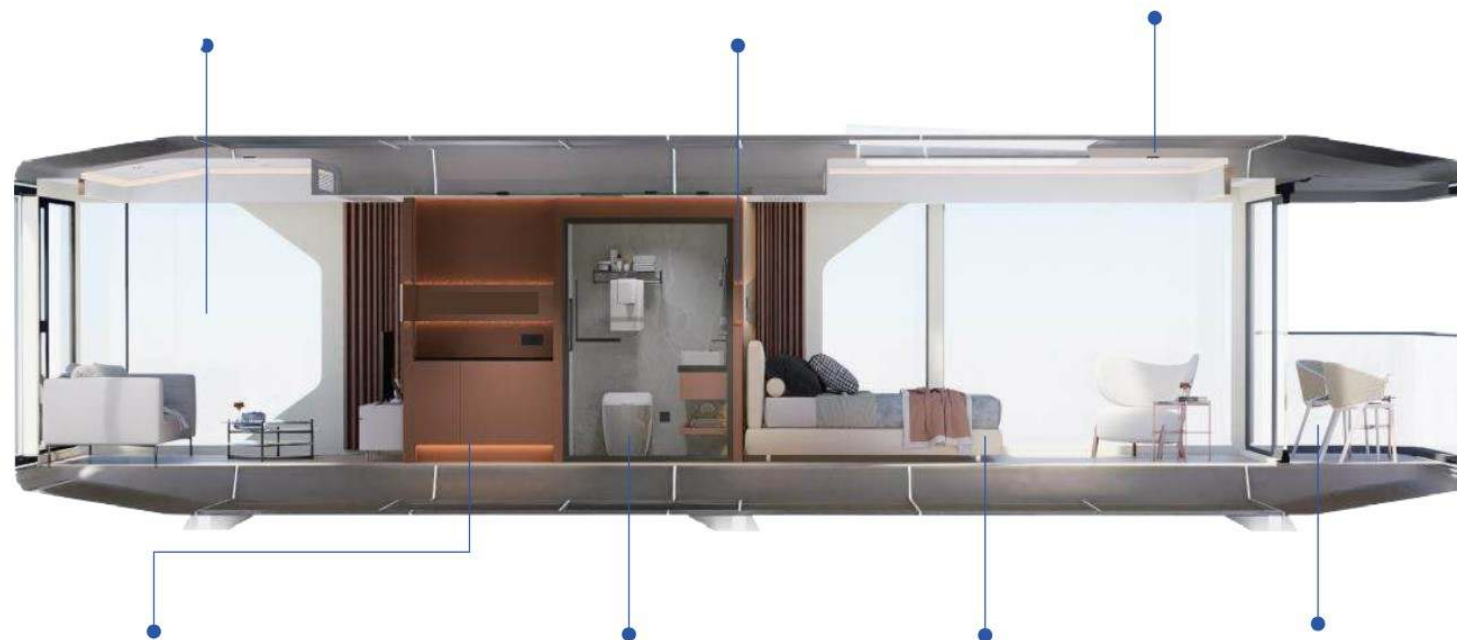
OPTIONAL

- Intelligent voice control system (CHINA)
- Fresh air system
- Underfloor heating system
- Solar power supply system
- Exclusive customized layout plan

The entire series is equipped with floor to ceiling observation windows ranging from 180° to 360°. Experience being awakened by the chirping of insects and birds, and open the curtains then you can see the jungle trees. Experience a dreamlike living experience through mountains and rivers.

The indoor area is equipped with lighting and ambient virtual light. Using lights with different color temperatures to cope with different usage environments. Combined with the sunlight or starry sky after the panoramic sunroof is opened. Create a warm and romantic lighting environment.

The top space can be integrated with air conditioning units, bathroom heaters, and exhaust equipment rooms. Concealed installation with reserved maintenance openings. Convenient for daily maintenance without affecting overall aesthetics.



Customized intelligent panels Dual control linkage, lighting, curtains All functions are easily accessible with just one touch.

All models have high-end top brand bathrooms, Dry and wet separation design, comfortable layout, Experience the pleasure brought by quality living.

Spacious flat space with customizable soft furnishings, Set it as various desired areas, Free exploration of various combinations and expandability.

At leisure, the balcony is the best place to relax your mind; E-series capsule, balcony and non-balcony models are designed to cater to customers with different needs; the layout design of the room can be customized.

PRODUCT MATERIAL DETAILS

Galvanized Steel

The main frame is made of 100mm*100mm galvanized steel pipe, weighing 2.6 tons, which is non-rusting, corrosion-resistant, of high strength, with good anti-seismic properties, and does not deform even after many lifts.

Hollow Low-e Glass

8+12A+8mm insulated Low-e glass for better sound and heat insulation, and coated for privacy.

Cement Fiber Board

A layer of pearl cotton in the middle of the floor and the floor, light weight, heat insulation, sound-absorbing sound insulation.

Cement Fiber Board

Light weight, high strength, good toughness, low thermal conductivity, good heat insulation and heat preservation performance, high density, good sound insulation.

Composite Wood Floor

Composite wood flooring grain realistic, super wear-resistant, high temperature resistance, not easy to deformation, fire and sound absorption.

Foundation

4-6 galvanized steel bases, high load-bearing capacity and can be placed on a foundation in any terrain.

Aluminum Panel

The exterior wall is made of 2.5mm aluminum plate with fluorocarbon baking paint process, which is not easy to rust and can be used for 30 years.

Polyurethane Foam

External overall spraying 50mm polyurethane foam, as the second layer of thermal insulation, stronger sealing, fire retardant, fire prevention, airtight sound insulation, sound-absorbing performance, green and environmental protection.

Extruded Polystyrene Board

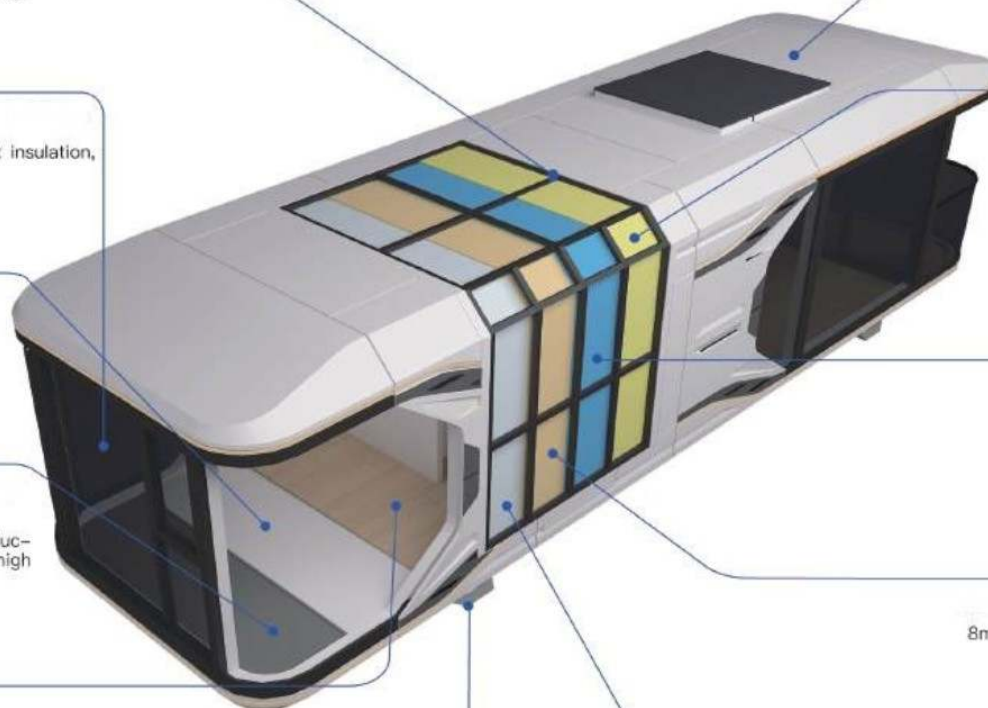
50mm extruded plastic board as the first layer of thermal insulation, thermal insulation, fire retardant and fire prevention, green environmental protection.

Oriented Strand Board

8mm europine board, easy to work with, provides good structural support and stability, green and moisture resistant.

Carbon Crystal Plate

The inner wall uses 6mm carbon crystal board, plate mute, high sealing, anti-insects and ants, moisture anti-corrosion, fire-retardant, high-strength, non-deformation, easy to scrub.



DELIVERY AND INSTALLATION



DELIVERY

The capsule is shipped from **India** to overseas, there are two ways of shipping, full delivery and modular. Whole setup requires 40FR, one cabinet only, of course the shipping cost will be more expensive. If you are buying more than one house, you can choose the disassembled option.

FOUNDATION

Before the house is delivered to you, you will need to prepare the foundations for it. We will provide you with detailed instructions and necessary drawings. Also, plan ahead for water, electricity and other systems.

INSTALLATION

The house can be delivery in the whole house or parts. You can arrange for a freight forwarder to deliver it. If delivered in the whole house, the installation is very simple and can be done in a few hours. If delivered in house parts, you can assemble it with detailed drawings and video instructions or our engineers team from China to guide assembly and installation.



APPLE CABIN



High expandability



No terrain Restriction



Fine Decoration



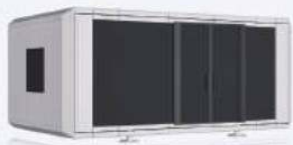
Fast Project Building



Easy Installation



High Return On Investment



A1(5.8m)

L*W*H: 5.8m*2.25m*2.45m

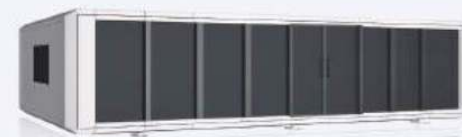
Area: 13.1m²



A1(8.5m)

L*W*H: 8.5m*2.25m*2.45m

Area: 19.1m²



A1(11.5m)

L*W*H: 11.5m*2.25m*2.45m

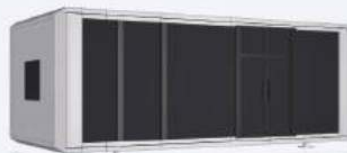
Area: 25.9m²



A2(5.8m)

L*W*H: 5.8m*3m*3m

Area: 17.4m²



A2(8.5m)

L*W*H: 8.5m*3m*3m

Area: 25.5m²



A2(11.5m)

L*W*H: 11.5m*3m*3m

Area: 34.5m²



D1

L*W*H: F1:11.5m*4.5m*2.4m F2: 11.5m*2.25m*2.45m

Area: 51.8m²+25.9m²



D2

L*W*H: F1:5.8m*2.25m*2.45m F2: 5.8m*2.25m*2.45m

Area: 13.1m²+13.1m²

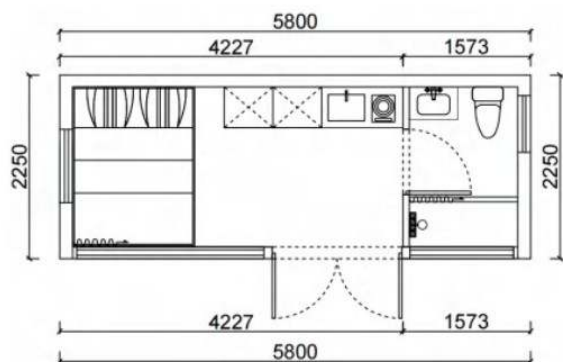


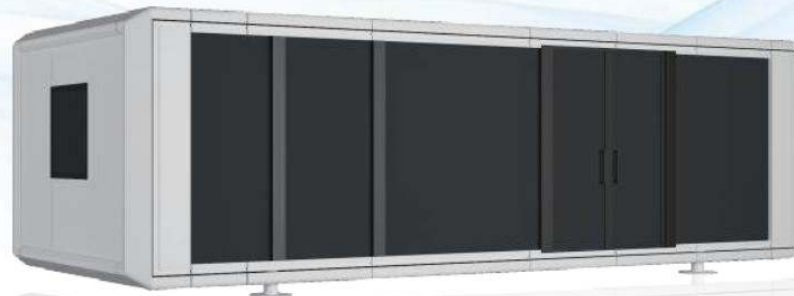
L*W*H: 5.8m*2.25m*2.45m

Area: 13.1m²



The Apple Cabin series is Volferda's mid-range product, with a square and regular space design that can be used for accommodation, office and other purposes with high expandability. The model A1 series is the most cost-effective of all the room models, containing three length-size models of 5.8m, 8.5m and 11.5m, which reduces the width and height of the house, making it possible to fit the house directly into the 40HQ and save on delivery costs.



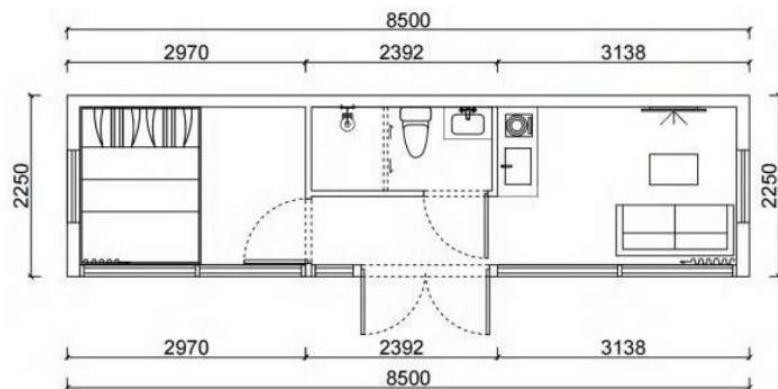


L*W*H: 8.5m*2.25m*2.45m

Area:19.1m²



This A1 8.5m model is an extended version of the A1 5.8m, with a two-bedroom, one-bathroom layout for high space utilization. It can be equipped with an optional front porch to enhance the living experience, and can be used for accommodation or office use. Easy to lift and transport, the 2.25 width makes it possible to fit directly into a 40HQ, saving on delivery costs.

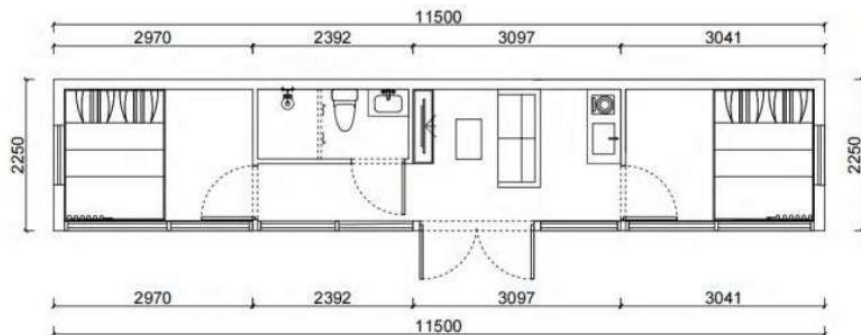


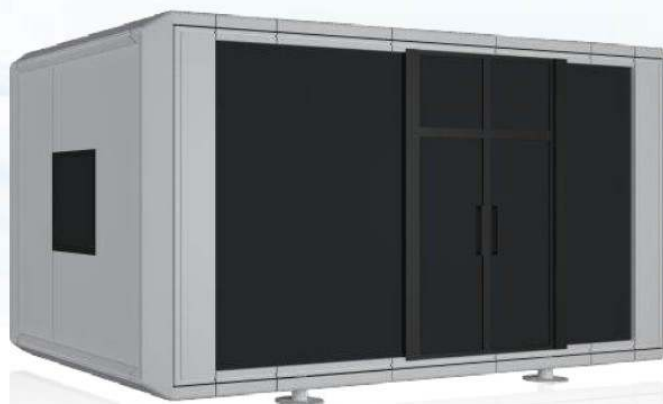


L*W*H: 11.5m*2.25m*2.45m Area:25.8m²



The model A1 11.5m is the most cost effective house. The extended length makes for a large interior space, allowing for additional kitchen and living room space on top of the original two bedrooms and one bathroom. The most important thing is that it can perfectly fit in 40HQ, saving shipping costs, and as a B&B hotel, it is one of the highest return on investment.



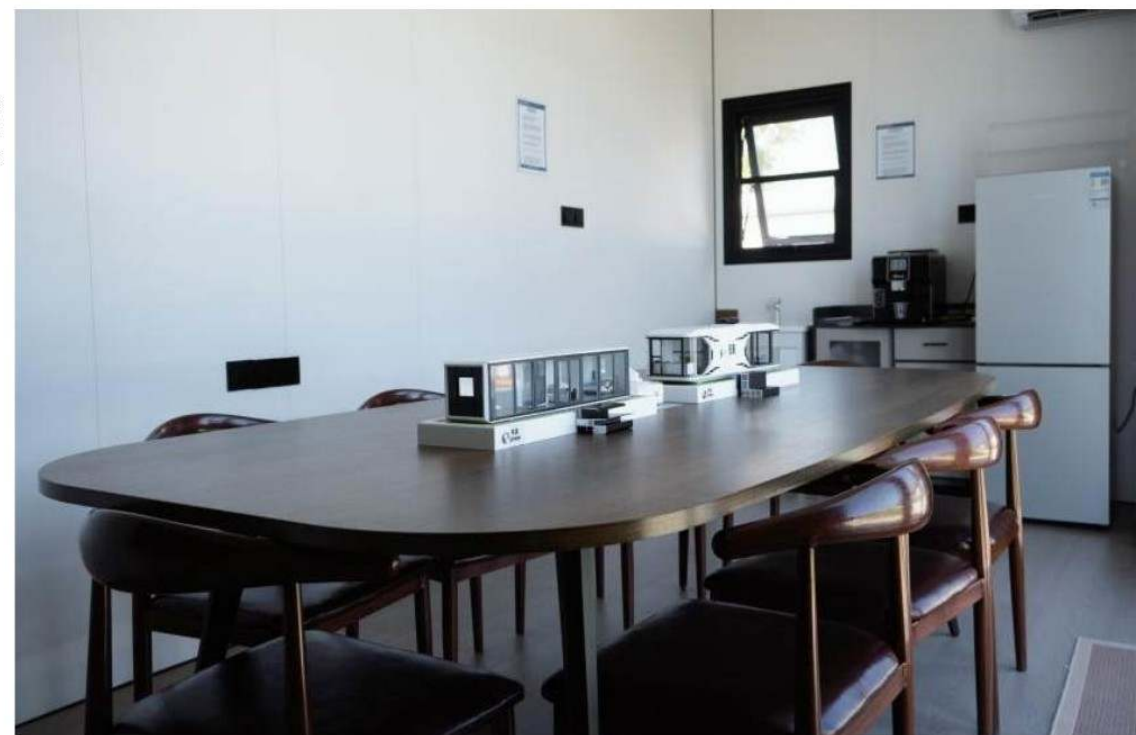
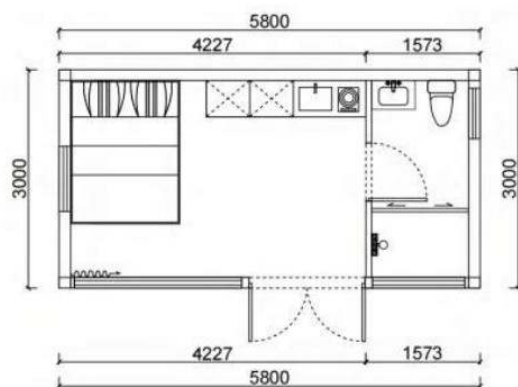


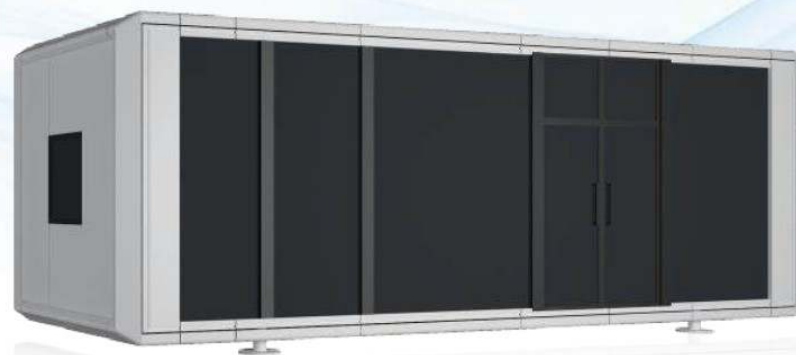
L*W*H: 5.8m*3m*3m

Area:17.4m²



The model A2 series is the upgraded version of A1 series, with the length (5.8m,8.5m,11.5m) remains the same, which increases the width and height of the house , from the original 2.25m to 3.2m, with larger and wider interior space. It can be used for hotel B&B residence, but also for office, exhibition hall, business center, etc. The square and regular interior space has more functional expansion.

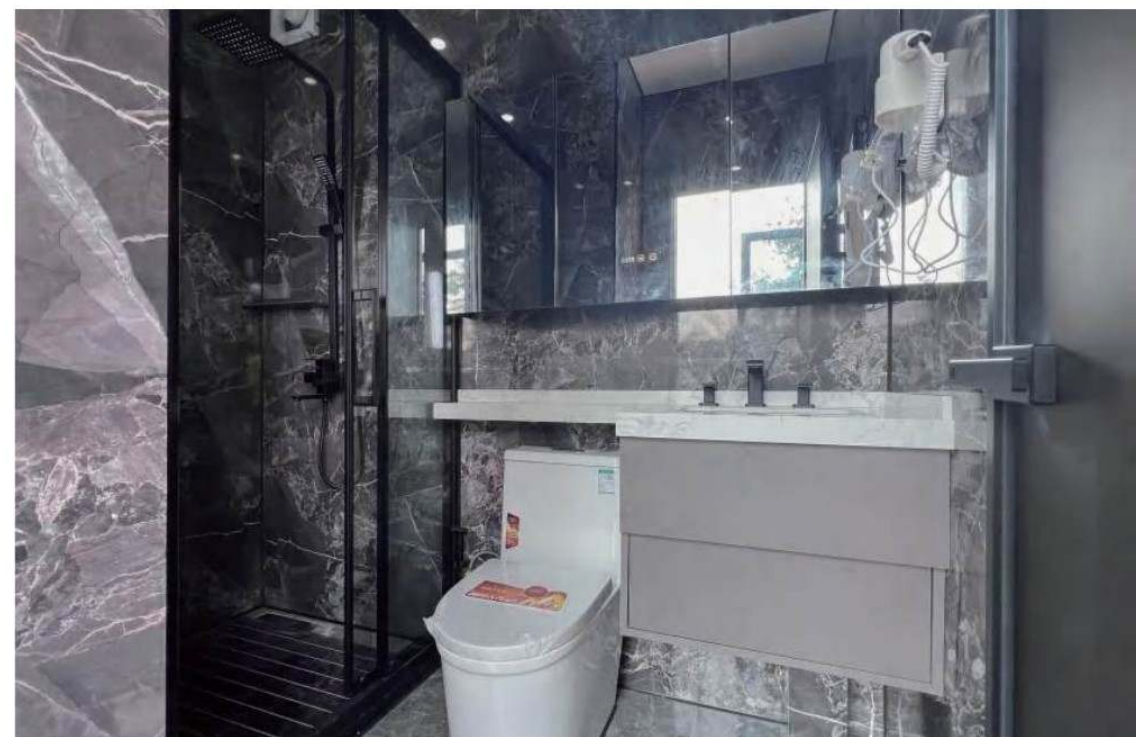
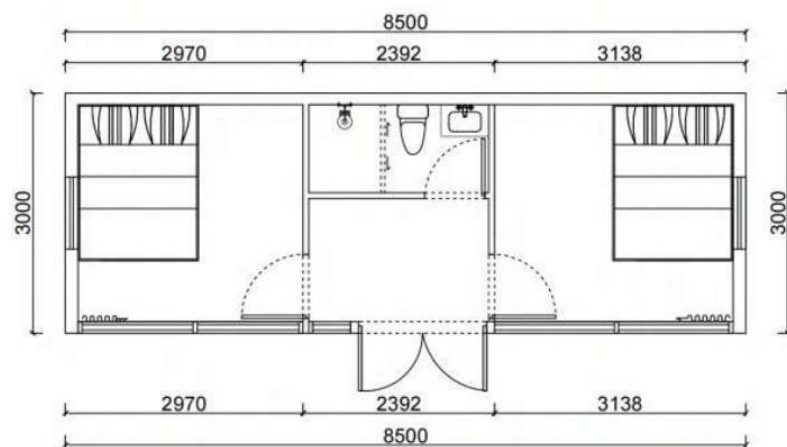




L*W*H: 8.5m*3m*3m Area:25.5m²

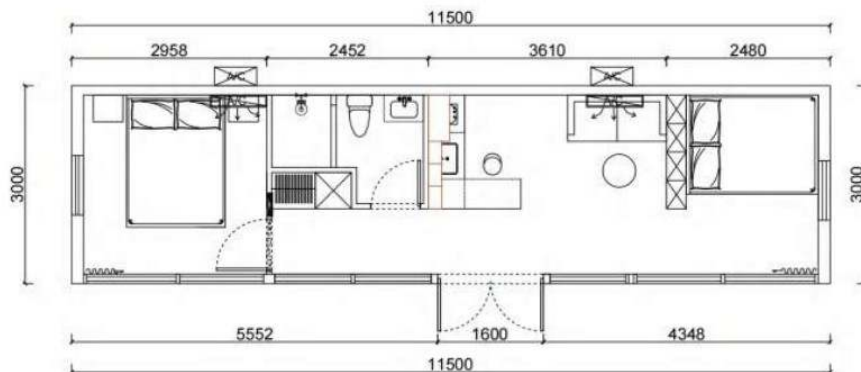


This A1 8.5m model is an extended version of the A1 5.8m, with a two-bedroom, one-bathroom layout for high space utilization. It can be equipped with an optional front porch to enhance the living experience, and can be used for accommodation or office use.





The model A2 11.5m is the extended version of the A2 8.5m , based on the original two-bedroom, one-bath layout, the kitchen and living room can be added, making the house more spacious. Matrix vertical space layout, space utilization is higher. Overall modeling, clean and concise. Especially suitable for individual family self-living, or economic B&B hotel.





L*W*H: F1: 11.5m*4.5m*2.45m F2: 11.5m*2.25m*2.45m Area: 51.8m²+25.9m²



D1 is the largest model, with a double cross-stacked design and beautiful styling. The first floor has a lot of space, suitable for living room or showroom, the first floor can lead to the second floor through the internal rotary staircase, there are rooms on the second floor, and there is a super large terrace outside for resting or partying. D1 is suitable for a large living experience, but also can be used for office, showroom and other purposes. The house can be disassembled into 4 small pods that fit directly into the 40HQ and then assembled locally to save on shipping costs.

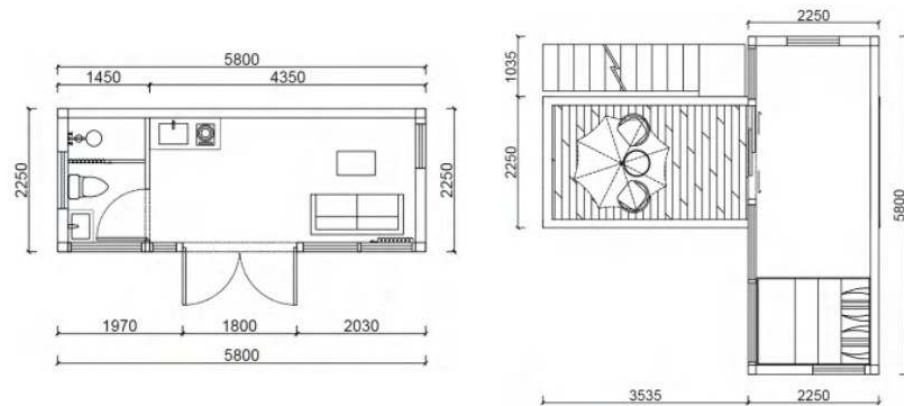




L*W*H: F1: 5.8m*2.25m*2.45m F2: 5.8m*2.25m*2.45m Area: 13.1m²+13.1m²



The D2 is a scaled down version of the D1, also with a double cross-stacked design, the overall house is compact and suitable for personal living and other small area use. The house can be disassembled into 2 small pods and loaded directly into the 40HQ, then assembled locally to save on shipping costs.





NATURAL HOUSE 3



Cost Effective



No terrain Restriction



Fine Decoration



Fast Project Building



Easy Installation



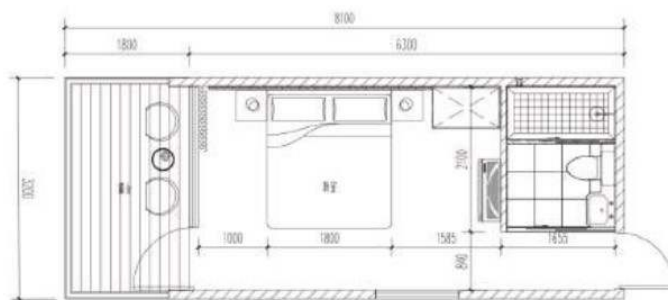
High Return On Investment



L*W*H: 6.3m+1.8m (balcony) *3.2m*3.25m Area: 20.16m²



The model N series is the most cost effective house. The exterior is in the classic shape of a cabin, with an indoor area of over 20m² and a 1.8m outdoor terrace, but it is not expensive. White, brown and wood grain colors are available, blending in with nature. Modular disassembly design, easy to transport overseas, easy to assemble and save project cost. Suitable for use as a personal owner-occupier, B&B and other purposes.

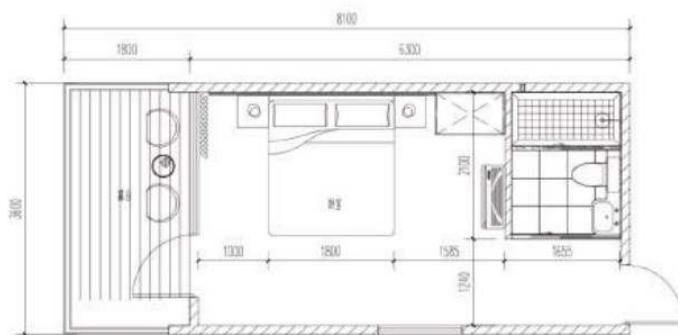




L*W*H: 6.3m+1.8m (balcony) *3.6m*3.25m Area: 22.68m²



The model N1 Plus is an upgraded model of the N1, increasing the width of the house from 3.2m to 3.6m, allowing for more interior space and more interior layouts. White, brown and wood grain colors are available. Modular disassembly design, can be directly transported by 40HQ, easy to assemble. Suitable for use as a personal self-living, hotel and camping.

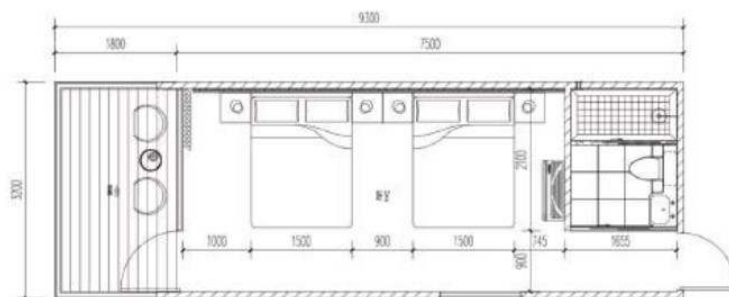




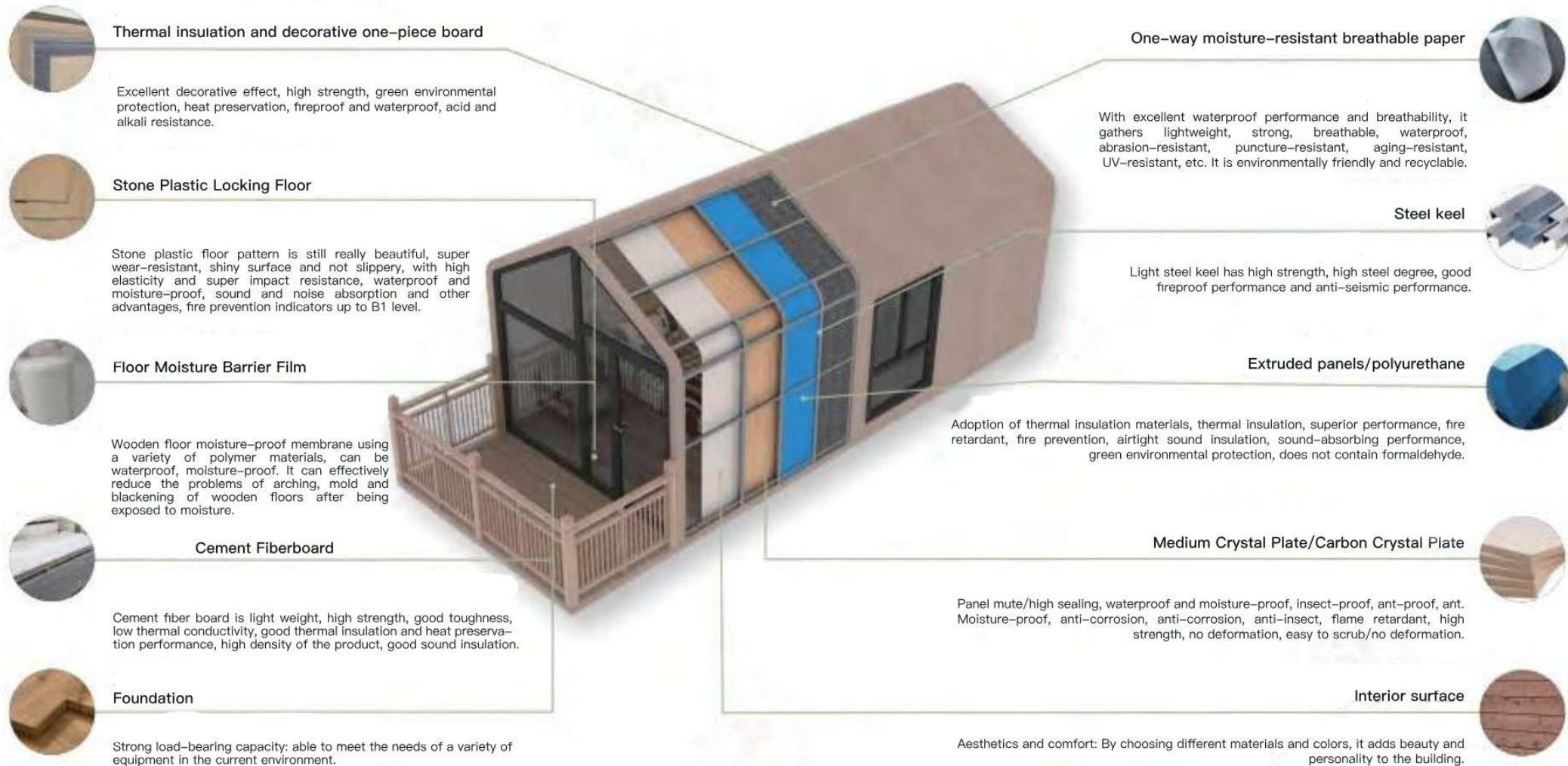
L*W*H: 7.5m+1.8m (balcony)*3.2m*3.25m Area: 24m²

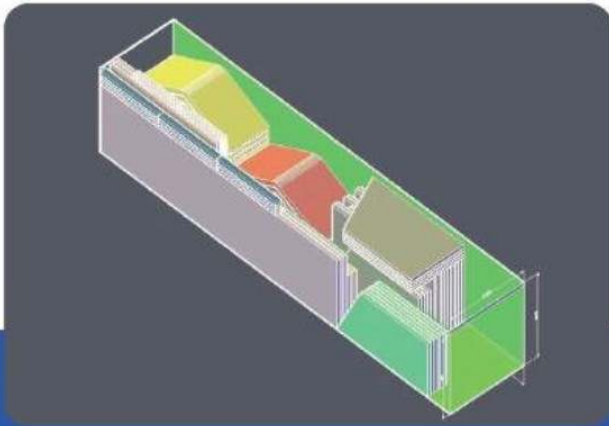


The model N2 is an extended model of N1, increasing the length of the house from 6.3m to 7.5m, making it more cost-effective with more space inside for 2 beds. White, brown and wood grain colors are available. Modular disassembly design, can be directly transported by 40HQ, easy to assemble. Suitable for use to make B&B hotel and campground and other purposes.



PRODUCT MATERIAL DETAILS





DELIVERY

Natural House uses modular delivery, a house will be split into 20+ pre-fabricated modules in advance, which can be put directly into 40HQ to save shipping cost. One 40HQ can hold 2-3 houses.

ASSEMBLY

After the modular house is delivered, you need to assemble it. The whole house assembly is not complicated and does not require professional workers as well as specialized equipment. We will provide you with detailed drawings and video instructions. 4 people can assemble a house in 1 day.

INSTALLATION

Before the house is installed, you will need to prepare the foundation. Also, plan the plumbing and electrical systems in advance. The installation of the Nutrual House is very simple, the overall weight of the house is 3-5 tons, and you only need to use a crane.



DOME HOUSE

4



Lower Cost



Hotel Living



Restaurant Dinner



No Terrain Restriction



Easy Installation



High Return On Investment

PRODUCT LIST



C1

φ: 2.5m/3m/3.5m/4m....
Area: 4.9m²/7.1m²/9.6m²/12.5m²...



C2

L: 5.5m/7m/8.5m/10m....
Area: 18.6m²/24.6m²/30.6m²/36.6m²...



C3

φ: 4m/4.5m/5m/6m....
Area: 17.4m²/20.8m²/24.5m²/33.2m²...



C4

L: 3.6m/4.2m/4.8m/5.4m/6m....
Area: 10.6m²/12.7m²/14.9m²/17m²...



Φ*H: 4m*2.8m Area:12.5m²



The Dome House series is one of the most cost-effective products. 360-degree panoramic and transparent view to take in the beautiful scenery. It is decorated with light strips, dreamy and colorful. The wall is made of PC board, which can withstand hundreds of pounds of pounding. Thermal insulation. Modular disassembly and transportation, 3 people can be assembled in 2 hours, suitable for hotel B&B, restaurant and other uses.



Φ*H: 2.5*2.5m / 4.9m²



Φ*H: 3*2.5m / 7.1m²



Φ*H: 3.5*2.7m / 9.6m²



φ*H: 4*2.8m / 12.5m²



Φ*H: 4.5*2.9m / 15.9m²



Φ*H: 5*3.1m / 19.6m²



Φ*H: 6*3.5m / 28.3m²



φ*H: 7*4.5m / 38.5m²





L*W*H: 9m*4.5m*2.9m Area:38.5m²



The model C2 is a rectangular dome house with a larger interior. With the bathroom partition, it can be made into a one-room and one-bathroom layout. Ventilation system installed on the top, ventilation and air permeability, not stuffy. The UV coating on the surface blocks ultraviolet rays, so you don't have to worry about tanning. Can be spliced arbitrarily to make a larger room type, more suitable for B&B accommodation, restaurants and other needs.



L*W*H: 5*3.5*2.7m
Area:14.9m²

L*W*H: 6.5*3.5*2.7m
Area:20.1m²

L*W*H: 8*3.5*2.7m
Area:25.4m²

L*W*H: 5.5*4*2.8m
Area:18.6m²



L*W*H: 7*4*2.8m
Area:24.6m²

L*W*H: 8.5*4*2.8m
Area:30.6m²

L*W*H: 6*4.5*2.9m
Area:22.7m²

L*W*H: 7.5*4.5*2.9m
Area:29.4m²





Φ: 6m+5m+2.5m

Area:52.8m²



The model C3 is a combination of starry sky room, random assembly combination of different sizes of starry sky room, into a one-room or two-bedroom and one-bathroom and other room types, to meet the needs of different customers. The circular design effectively disperses the wind flow and is safe even in a 12-stage typhoon. Modularized on-site assembling structure, not picking terrain and saving delivery cost.



Φ: 4m+2.5m / 17.4m²



Φ: 4.5m+2.5m / 17.4m²



Φ: 5m+2.5m / 24.5m²



Φ: 6m+2.5m / 33.2m²

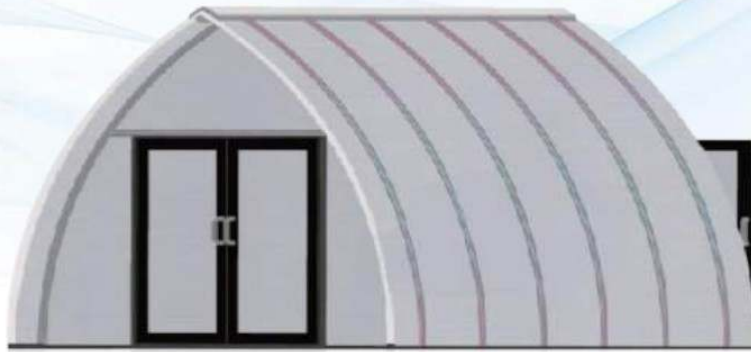


Φ: 5m+4m+2.5m / 37m²



Φ: 6m+4m+2.5m / 45.7m²





L*W*H: 6.6m*3.68m*3.6m Area:21.2m²



The model C4 is inspired by sailboat and has a novel appearance. 16mm thick PC board for heat insulation. The skeleton is made of 6063 aviation aluminum profile, more resistant to wind and snow. Opaque walls for privacy and better lighting. Modular assembling, easy to transport and quick to assemble. With partition bathroom, it can be made into one room and one bathroom layout, more suitable for hotel B&B.



L*W*H: 4.8m*3.68*3.6m
AREA:14.9m²



L*W*H: 5.4m*3.68*3.6m
AREA:17m²



L*W*H: 6m*3.68*3.6m
AREA:19.1m²



L*W*H: 7.2m*3.68*3.6m
AREA:23.4m²



L*W*H: 7.8m*3.68*3.6m
AREA:25.5m²



L*W*H: 8.4m*3.68*3.6m
AREA:27.6m²



PRODUCT MATERIAL DETAILS

STANDARD CONFIGURATION

PC Transparent Housing

PC Dome

Aluminum doors

Aluminum window

Physical door lock

Aluminum bottom profile

OPTIONAL

Top smoke extraction system

Shading systems

LED ambient lighting system

Insect screen doors and windows

Double bed/sofa/coffee table/Computer desk/chair furniture

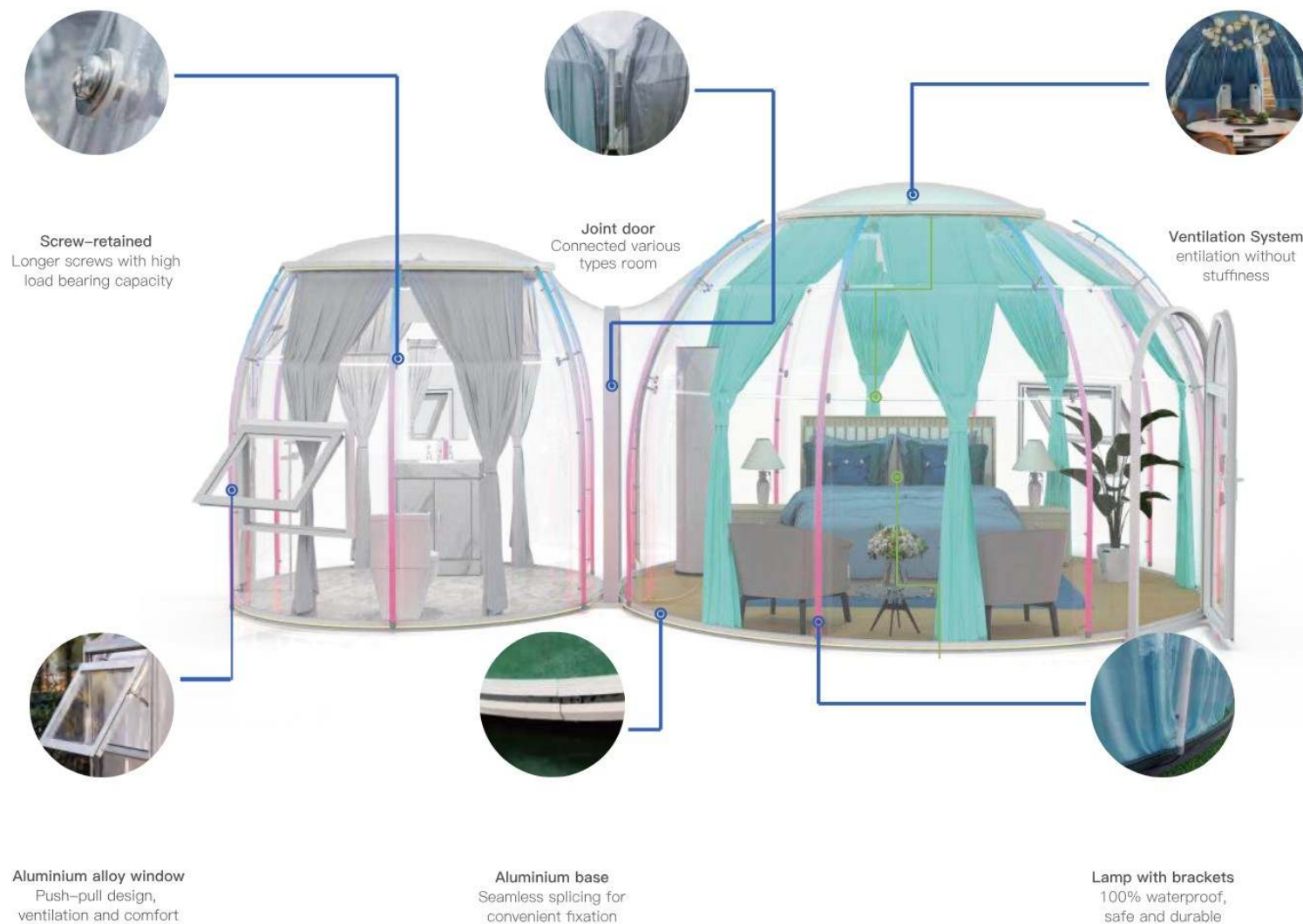
Bathroom/Toilet/Bathtub

Mirror/Hanger/Washstand

Various lamps/LCD TVs/Air conditioner/Refrigerator

Bathroom Flooring/Moisture Mats/Anti-corrosive wood flooring

Exclusive customized layout plan





DELIVERY

Dome house uses modular delivery, PC boards, doors, windows, profiles and other related materials are packed with foam in advance in the factory, which can be put in 40HQ to save shipping cost.



FOUNDATION

Before the house is delivered to you, you will need to prepare the foundations for it. We will provide you with detailed instructions and necessary drawings. Also, plan ahead for water, electricity and other systems.



INSTALLATION

Dome house installation is very simple, each panel is connected with snap fasteners between each panel, no need for professional builders and specialized equipment, you can install several houses in one day. Meanwhile, we will provide you with detailed drawings or video instructions for assembly.

